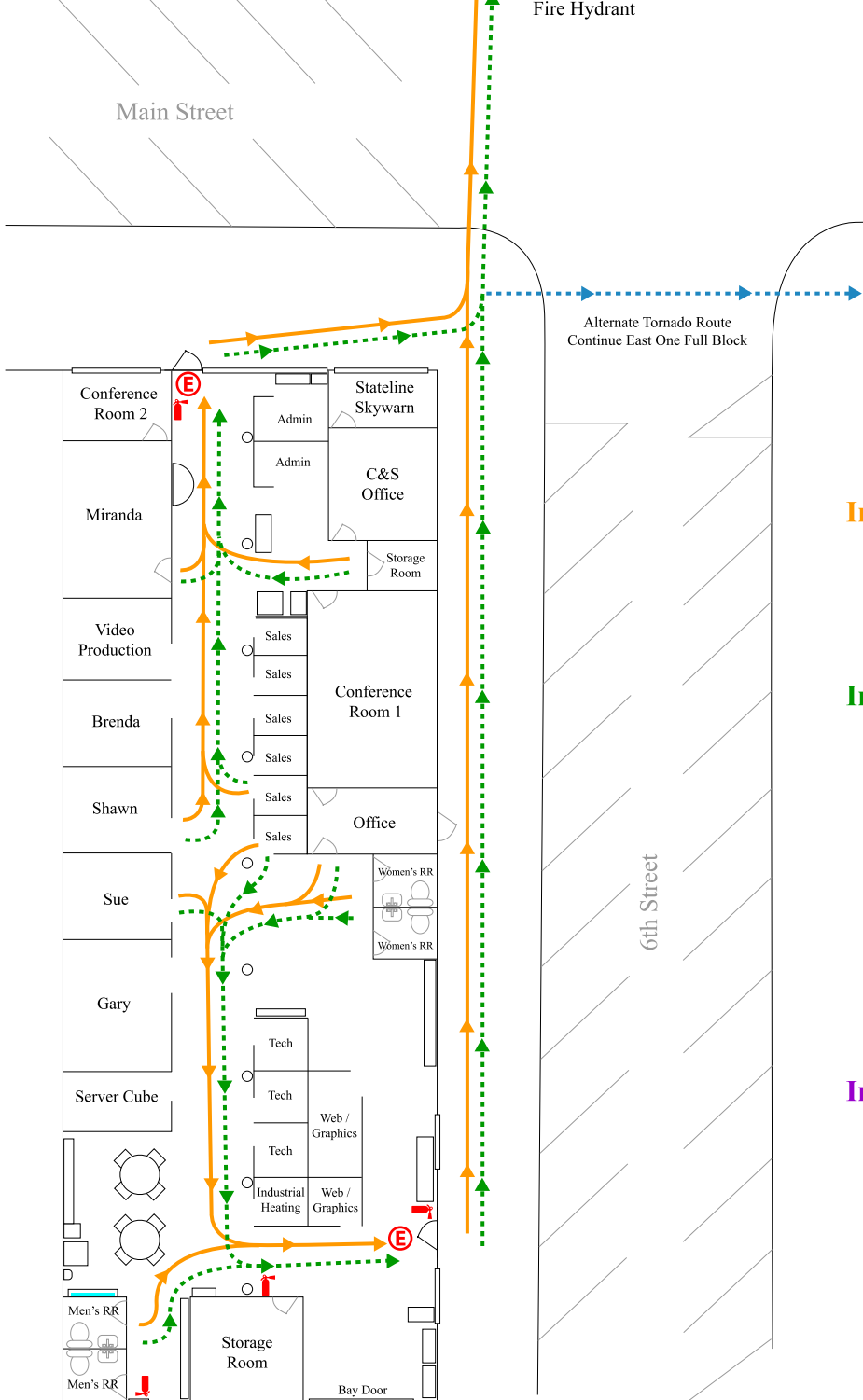
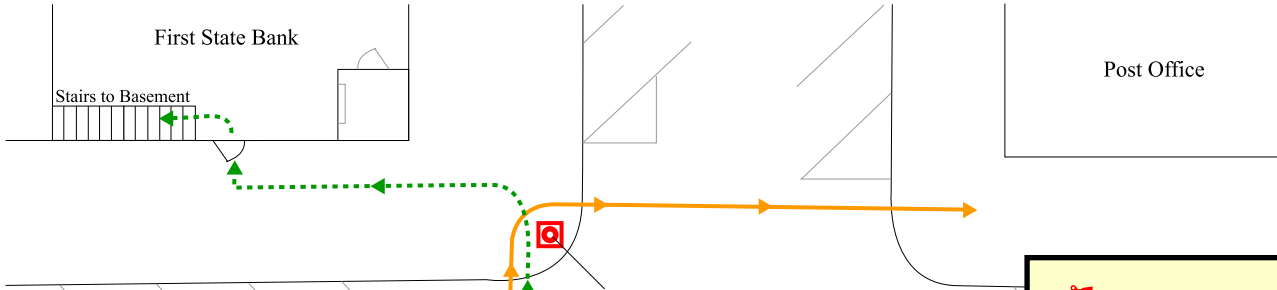


543 Main Street Building Evacuation Routes



	Fire Extinguisher
	Fire Route
	Tornado Route
	Emergency Exit
	MSDS / SDS

RSI Incident Commanders

Miranda Walz-Allen
Gary Jacobs
Brenda Myers

In Case of Fire:

- Exit building immediately
- Watch for traffic & cross street to the corner of the Post Office
- Stay assembled until released

In Case of Tornado:

- Exit building immediately
- Watch for traffic & cross street to the First State Bank*
- Head left, down the stairs to basement
- Stay assembled until released

- * if unable to reach Bank, go East down main street one block to the church on the corner
- Enter the church basement
- Stay assembled until released

In Case of Earthquake:

- If you are indoors:
 - Get under a sturdy table or desk
 - Brace yourself in an inside corner way from windows
 - Move to an inner wall or corridor (door frame, or equally structural frame)
- If you are outdoors:
 - Move away from buildings, power poles, and lamposts. Avoid any fallen power lines
- Stay where you are until danger has passed and you are released by an Incident Comander